



QUICK REFERENCE GUIDE

| omni brake | | | ultra life+ | | | Description | B Dimension | Caged |
|--|---------------|---------------------|--------------------|--------------------|------------------------|--|-------------|-------|
| OmniBrake | VCT OmniBrake | REX OmniBrake | UltraLife Plus | VCT UltraLife Plus | REX UltraLife Plus | | | |
| TSE Generic Will-Fit Units | | | | | | | | |
| 2024TN2-C | | | | | | T-2024 2.5" stroke + clevis | 7.75" | N |
| 2424TN2-C | | | | | | T-2424 2.5" stroke + clevis | 7.75" | N |
| 2430TN2-C | | | | | | T-2430 2.5" stroke + clevis | 7.85" | N |
| | | | | | | T-2430 3.0" stroke + clevis | 7.25" | N |
| 3030TN2 | | 3030TVR2 + K575 | 3030TN2ULP-C | | 3030TVR2ULP + K575 | T-3030 2.5" stroke | 7.85" | N |
| 3030TN2-C | | 3030TVR2 + K575 | 3030TN2ULP-C | | 3030TVR2ULP + K575 | T-3030 2.5" stroke + clevis | 7.85" | N |
| 3030TN3 | | 3030TVR3 + K575 | | | 3030TVR3ULP + K575 | T-3030 3.0" stroke | 7.35" | N |
| 3030TN3-C | | 3030TVR3 + K575 | 3030TN3ULP-C | | 3030TVR3ULP + K575 | T-3030 3.0" stroke + clevis | 7.35" | N |
| | | | | | | T-3036 2.5" stroke + clevis | 7.80" | N |
| | | | | | | T-3036 3.0" stroke + clevis | 7.30" | N |
| | | | | | | T-3636 3.0" stroke + clevis | 7.25" | N |
| | | | | 3036TVW3ULP-80114 | | T-3036 3" stroke welded clevis 2.25 "A" dim. | 2.25" | N |
| Piggyback Kits | | | | | | | | |
| | 3030SV2K | | | 3030SV2ULPK | | VCT T-3030 2.5" stroke single Kit + Box | - | Y |
| | 3030SV3K | | | 3030SV3ULPK | | VCT T-3030 3.0" stroke single Kit + Box | - | Y |
| 3030 Direct Fit Units (Clamped + Threaded Rod) | | | | | | | | |
| 3030TN3-2390 | | | 3030TN3ULP-80053 | | | T-3030 3.0" stroke + clevis | 5.75" | Y |
| 3030TN2-HNTRX-C | 3030TV2-HNTRX | 3030TVR2 + K975 | 3030TN2ULP-HNTRX-C | 3030TV2ULP-HNTRX | 3030TVR2ULP + K975 | T-3030 2.5" stroke + long rod + clevis | 9.75" | N |
| 3030TN3-HNTRX-C | 3030TV3-HNTRX | 3030TVR3 + K975 | 3030TN3ULP-HNTRX-C | 3030TV3ULP-HNTRX | 3030TVR3ULP + K975 | T-3030 3.0" stroke + long rod + clevis | 9.75" | N |
| 3030 Direct Fit Units (Tamper Proof + Pre Cut Threaded Rod) | | | | | | | | |
| 3030TL2-2401 | | | 3030TL2ULP-80027 | | | T-3030 2.5" stroke | 5.75" | Y |
| 3030TL3-3265 | | | 3030TL3ULP-80015 | | | T-3030 3.0" stroke | 5.75" | Y |
| 3030TL2-2412 | | | | | | T-3030 2.5" stroke + long rod | 9.75" | Y |
| 3030TL3-2517 | | | | | | T-3030 3.0" stroke + long rod | 9.75" | Y |
| 3030 Direct Fit Units (Tamper Proof + Welded Clevis) | | | | | | | | |
| 3030TLW3-4020 | | | 3030TLW2ULP-80045 | | | T-3030 2.5" stroke + welded clevis | 6.80" | Y |
| | | | 3030TLW3ULP-80036 | | | T-3030 3" stroke + welded clevis | 6.80" | Y |
| 3030 With Clevis For Truck & Trailer Application | | | | | | | | |
| | | | 3030TL2ULP-80026 | | | T-3030 2.5" stroke + clevis | 5.75" | Y |
| | | | 3030TL3ULP-80011 | | | T-3030 3.0" stroke + clevis | 5.75" | Y |
| 3030 With Welded Clevis For Truck & Trailer Application | | | | | | | | |
| 3030TNW2-2998 | replaced by | 3030TVR2 + K225-130 | | replaced by | 3030TVR2ULP + K225-130 | T-3030 2.5" stroke + welded clevis | 2.25" | Y |
| | 3030TVW3-4200 | 3030TVR3 + K225-130 | 3030TNW3ULP-80060 | replaced by | 3030TVR3ULP + K225-130 | T-3030 3.0" stroke + welded clevis | 2.25" | Y |
| 3030TNW2-3612 | replaced by | 3030TVR2 + K287-130 | | replaced by | 3030TVR2ULP + K287-130 | T-3030 2.5" stroke + welded clevis | 2.87" | Y |
| | replaced by | 3030TVR3 + K287-130 | | replaced by | 3030TVR3ULP + K287-130 | T-3030 3.0" stroke + welded clevis | 2.87" | Y |
| | replaced by | 3030TVR2 + K680-130 | | replaced by | 3030TVR2ULP + K680-130 | T-3030 2.5" stroke + welded clevis | 6.80" | Y |
| | replaced by | 3030TVR3 + K680-130 | | replaced by | 3030TVR3ULP + K680-130 | T-3030 3.0" stroke + welded clevis | 6.80" | Y |
| 3030TNW3-3616 | replaced by | 3030TVR2 + K110-130 | | replaced by | 3030TVR2ULP + K110-130 | T-3030 2.5" stroke + welded clevis | 11.00" | Y |
| | replaced by | 3030TVR3 + K110-130 | | replaced by | 3030TVR3ULP + K110-130 | T-3030 3.0" stroke + welded clevis | 11.00" | Y |
| Remote Chambers | | | | | | | | |
| 30RPC2 | | | | | | T-30 Remote 2.5" stroke | 6.57" | N |
| 30RPC3 | | | | | | T-30 Remote 3.0" stroke | 6.20" | N |
| 12SCN0-C | | | | | | T-12 1.75" stroke + clevis | 8.55" | N |
| 16SCN1-C | | | | | | T-16 2.25" stroke + clevis | 8.05" | N |
| 20SCN1-C | | | | | | T-20 2.25" stroke + clevis | 8.00" | N |
| 20SCN2-C | | | | | | T-20 2.5" stroke + clevis | 7.75" | N |
| 24SCN2-C | | | | | | T-24 2.5" stroke + clevis | 7.75" | N |
| 24SCN3-C | | | | | | T-24 3.0" stroke + clevis | 7.15" | N |
| 30SCN2-C | | | | | | T-30 2.5" stroke + clevis | 7.75" | N |
| 30SCN2-HNTRX-C | | | | | | T-30 2.5" stroke + long rod + clevis | 9.75" | N |
| 30SCN3 | | | | | | T-30 3.0" stroke + clevis | 7.30" | N |
| 36SCN3-C | | | | | | T-36 3.0" stroke + clevis | 7.20" | N |
| Service Chambers With Welded Clevis | | | | | | | | |
| 20SCLW2 | | | 20SCLW2ULP | | | T-20 2.5" stroke + welded clevis | 2.25" | N |
| 24SCLW2 | | | | | | T-24 2.5" stroke + welded clevis | 2.25" | N |
| 24SCLW3 | | | 24SCLW3ULP | | | T-24 3.0" stroke + welded clevis | 2.25" | N |
| | | | 30SCNW3ULP | | | T-30 3.0" stroke + welded clevis | 2.25" | N |
| Air Disc Brake - Tandem Units | | | | | | | | |
| 1616HTLD2-3627 | | | | | | For 1616 Piston Or 1624 Double Diaphragm | - | Y |
| 1816HTND2-3669 | | | 1816HTND2UL-4312 | | | For 1816 Piston Or 1824 Double Diaphragm | - | Y |
| 2016HTND2-3710 | | | 2016HTND2UL-4313 | | | For 2016 Piston Or 2024 Double Diaphragm | - | Y |
| 1824HTND2-3628 | | | | | | For 1824 Piston Or 1830 Double Diaphragm | - | Y |
| 2024HTND2-3626 | | | | | | For 2024 Piston Or 2030 Double Diaphragm | - | Y |
| 2424HTND2-3629 | | | | | | For 2424 Piston Or 2430 Double Diaphragm | - | Y |
| Air Disc Brake - Service Chambers | | | | | | | | |
| 18HSCND2-4026 | | | | | | T-18 Disc 2.5" stroke | - | Y |
| 20HSCND2-3630 | | | | | | T-20 Disc 2.5" stroke | - | Y |
| 22HSCND2-3631 | | | | | | T-22 Disc 2.5" stroke | - | Y |
| 24HSCND2-3632 | | | | | | T-24 Disc 2.5" stroke | - | Y |

omnibrake TSE-REX

- All-steel brake chamber
- Center sealed assembly
- Pre-tempered main spring
- Service Diaphragm Sealed In Piggyback 1 Bolt Clamp & Cannot Leak When Air Inlet Ports Are Clocked
- Pre-cut pushrod system

STROKE OPTION: 2.5" AND 3.0"
 WARRANTY: 4 YEARS
 SIZE OPTION: 30-30



omnibrake

- All-steel brake chamber
- Center sealed assembly
- Pre-tempered main spring
- Patented Bushing Assembly
- Self-Lubricating Center Seal
- Sealed Service Side (TL) Eliminates Clamp
- Regular Clamp (TN)

STROKE OPTION: 2.5" AND 3.0"
 WARRANTY: 4 YEARS
 SIZE OPTION: 24-24, 24-30, 30-30, 30-36



ultra life+

- All-steel brake chamber
- Exclusive "No Touch" spring
- Recessed pressure plate
- All in one pressure plate
- Dust cap relief valve
- Urethane coating
- Inverted housing design eliminates coil to coil contact
- Sealed when it counts

STROKE OPTION: 2.5" AND 3.0"
 WARRANTY: 10 YEARS
 SIZE OPTION: 30-30 AND 30-36



Note: Many other part numbers not listed are available for CAM and Air Disc brake applications, please call your TSE Brakes representative for any questions

TSEBRAKES.COM

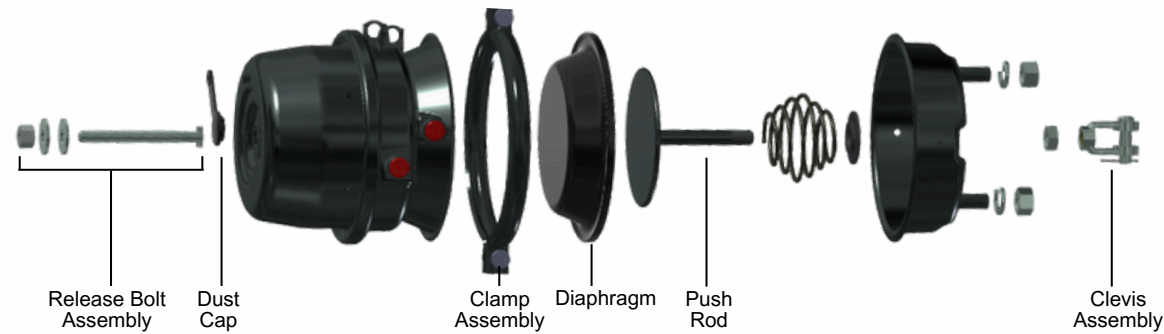
1 (256) 736-6275



QUICK REFERENCE GUIDE

Components

| Service Parts | Stroke | Release Bolt Assembly | Dust Cap | Clamp Assembly | Diaphragm | Push Rod | Clevis Assembly |
|-------------------|--------|-----------------------|----------|----------------|-----------|------------------|-----------------|
| Type 9 | 1.75" | N/A | N/A | N/A | N/A | N/A | K1103023 |
| Type 12 | 1.75" | N/A | N/A | N/A | K100120 | N/A | K1103023 |
| Type 16 | 2.25" | N/A | N/A | N/A | K101160 | N/A | K1103023 |
| Type 20 | 2.25" | K1003015-PL | K1173007 | N/A | K116200 | N/A | K1103023 |
| Type 20 LS | 2.5" | K1003015-PL | K1173007 | N/A | K116200 | N/A | K1103023 |
| Type 24 | 2.5" | K1003015-PL | K1173007 | N/A | K101240 | N/A | K1103023 |
| Type 24 LS | 3.0" | K1001058-PL | K1173007 | K1002413 | K113240 | N/A | K1103023 |
| Type 30 | 2.5" | K1003015-PL | K1173007 | K1343013-EC | K1003000 | K2-1003011-15.15 | K1103023 |
| Type 30 LS | 3.0" | K1001058-PL | K1173007 | K1343013-EC | K113300 | K3-1003011-15.65 | K1103023 |
| Type 36 | 3.0" | N/A | K1173007 | N/A | N/A | N/A | K1103023 |



Components

| Description | Part Number | Image |
|--|-------------|-------|
| Clevis Pin 1/2" Stainless Steel | K1103023-2S | |
| Clevis Pin 1/4" Stainless Steel | K1153023-3S | |
| Clevis Pin 1/2" | K1003025 | |
| Clevis Pin 5/8" | K1013025 | |
| Clevis Assembly 5/8" Rod + 5/8" Pin | K2243023-PL | |
| Clevis Assembly 5/8" Rod + 14mm Pin (Metric) | K2103023 | |
| Clevis Assembly 5/8" Rod + 1/2" SS Pin | K1013023S | |
| Dust Boot Assembly Heavy Duty | K1011051 | |
| Drain Hole Plugs | K1001130 | |

Slack Adjusters

| Part Number | Hard-ware Kit | Type | Application | Inclination | L1 | Bush ID | Spline # | Mounting |
|-------------|---------------|-------|---------------|-------------|-----|---------|----------|----------|
| TSE07100S | TSE01701K | S-ASA | Truck/Trailer | L 34 | 5.5 | 5/8 | 28 | Stud |
| TSE07105S | TSE01705K | S-ASA | Truck/Trailer | R 34 | 6 | 1/2 | 28 | N/A |
| TSE07110S | TSE01705K | S-ASA | Truck/Trailer | R 34 | 6 | 1/2 | 10 | Stud |
| TSE07115S | TSE01705K | S-ASA | Truck/Trailer | None | 6 | 1/2 | 28 | N/A |
| TSE07125S | TSE01705K | S-ASA | Truck/Trailer | None | 6 | 1/2 | 10 | N/A |
| TSE07130S | TSE01711K | S-ASA | Truck/Trailer | None | 6 | 1/2 | 28 | N/A |
| TSE07135S | TSE01705K | S-ASA | Truck/Trailer | None | 5.5 | 1/2 | 28 | N/A |
| TSE07140S | TSE01705K | S-ASA | Truck/Trailer | None | 5.5 | 1/2 | 10 | N/A |
| TSE07145S | TSE01701K | S-ASA | Drive | None | 5.5 | 1/2 | 10 | Stud |
| TSE07155S | TSE01701K | S-ASA | Truck/Trailer | L 34 | 6 | 5/8 | 28 | Stud |
| TSE07235S | TSE01709K | S-ASA | Drive | None | 5.5 | 5/8 | 10 | Stud |

REX Pushrods

| Part Numbers | Description | Typical Applications | Works W/Brands And Models * | Box Color Code |
|---|---|--|-----------------------------|----------------|
| REX Brake Chambers | | | | |
| 3030TVR2 | REX T-3030 + Stroke = 2.5" + 4 Year Warranty | | | |
| 3030TVR3 | REX T-3030 + Stroke = 3.0" + 4 Year Warranty | | | |
| 3030TVR2ULP | REX ULP T-3030 + Stroke = 2.5" + 10 Year Warranty | | | |
| 3030TVR3ULP | REX ULP T-3030 + Stroke = 3.0" + 10 Year Warranty | | | |
| Push Rod Kits - Threaded Includes Jam Nut Installed | | | | |
| K575 | 5.75" B dimension threaded Rod | Standard 5" trailer axle | All | Gold |
| K631 | 6.31" B dimension threaded Rod | SAF axle | All | Silver |
| K706 | 7.06" B dimension threaded Rod | Meritor large diameter axle | All | Purple |
| K975 | 9.75" B dimension threaded Rod | Intraax/Vantraax | All | Green |
| K150 | 15.0" B dimension threaded Rod | Universal fully threaded | All | None |
| Push Rod Kits - Fixed Clevis Includes Stainless Steel Pins And Cotters Installed | | | | |
| K225-130 | 2.25" A dimension Fixed Clevis with 1.3" pin spacing | Truck welded clevis | 1, 3, 4, 6, 8 | None |
| K680-102 | 6.80" A dimension Fixed Clevis with 1.02 pin spacing | Standard 5" Axle Gunite Slack | 1, 2 | Orange |
| K680-130 | 6.80" A dimension Fixed Clevis with 1.3" pin spacing | Standard 5" Axle | 1, 3, 4, 6, 8 | Yellow |
| K680-138 | 6.80" A dimension Fixed Clevis with 1.38" pin spacing | Standard 5" trailer axle Meritor, Stemco slack | 1, 5, 7 | White |
| K110-130 | 11.0" A dimension Fixed Clevis with 1.3" pin spacing | Intraax/Vantraax | 1, 3, 4, 6, 8 | Brown |
| K110-138 | 11.0" A dimension Fixed Clevis with 1.38" pin spacing | Intraax/Vantraax Meritor, Stemco slack | 1, 5, 7 | Blue |

*Auto Slack Notes

| | | | | | | | |
|---|--------------------------------------|---|-------------------------------------|---|-------------------------------------|---|-------------------------|
| 1 | TSE/Webb/MEI/Haldex (0.5" Pin) | 3 | Gunite 2000 Series 1.3" Pin Spacing | 5 | Meritor 1.38" Pin Spacing (Trailer) | 7 | Stemco 1.8" Pin Spacing |
| 2 | Gunite 1000 Series 1.02" Pin Spacing | 4 | Meritor 1.3" Pin Spacing (Truck) | 6 | Stemco 1.3" Pin Spacing | 8 | Bendix Versajust |

indicator slack adjuster

- Clearance sensing design
- Easy design installation
- No template require
- Easy to read stroke indicator
- High resistance E-Coat system
- Rubber caps for prevention of water ingress
- Pressure release valve
- Heavy duty pin bushing

SPLINE OPTION WARRANTY SIZE OPTION

10 AND 28 7-10 YEARS 5", 5.5" AND 6"



brake adjuster

- Clearance sensing design
- Easy design installation
- No template require
- High resistance E-Coat system
- Heavy duty pin bushing
- Pressure release valve prevents over-greasing

SPLINE OPTION WARRANTY SIZE OPTION

10 AND 28 7 YEARS 5", 5.5" AND 6"

