



**RAPID EXCHANGE RODS
TO GO WHERE NO SPRING
BRAKE HAS GONE BEFORE**

ultralife+TM TSE-REX

TSE ULTRALIFE PLUS REX - RAPID EXCHANGE RODS

THE ULTRALIFE PLUS REX CHARACTERISTICS

Simplified Installation

With Rapid Exchange Technology, UltraLife Plus REX reduces installation time by up to 75%, featuring universal fit designs and factory-sealed diaphragms that eliminate errors.

Inventory Optimization

Just two part numbers cover most applications, minimizing the need for excessive stock and simplifying inventory management for suppliers.

Proven Reliability

Backed by patented designs and extensive in-house testing, UltraLife Plus REX delivers dependable performance under the most demanding conditions.

Rigorous Testing

Our extended durability testing simulates real-world operating conditions, virtually guaranteeing unmatched reliability under the most demanding environments.

KEY BENEFITS FOR AFTERMARKET SUPPLIERS

Rapid Installation

Pre-assembled, universal-fit components ensure faster service times and fewer errors.

Corrosion Protection

Advanced multi-layer coating system resists rust and wear, extending product life.

Comprehensive Warranty

Backed by up to 10 years of coverage for standard use, offering peace of mind to fleet operators.

Reduced Inventory Complexity

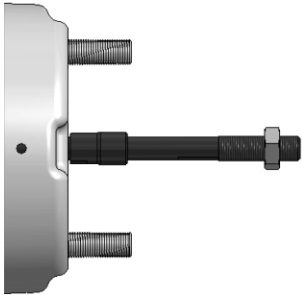
Covers most applications with minimal part numbers, optimizing stock management.

TSE ULTRALIFE PLUS REX

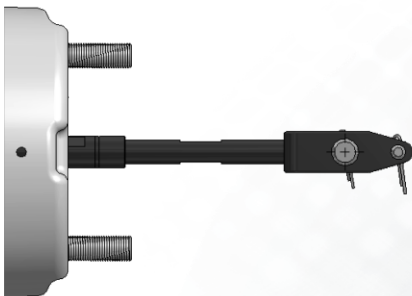


TSE UltraLife Plus REX Part Numbers

3030TVR2ULP : 3030 2.5" Stroke | 3030TVR3ULP : 3030 3" Stroke



Single Kit Models	Box Color Code	Description	Typical Applications	Works with the following Auto-Slack brands & models*
Push rod kits - Threaded includes jam nut installed				
K575	Gold	5.75" B dimension threaded Rod	Standard 5" trailer axle	All
K631	Silver	6.31" B dimension threaded Rod	SAF axle	
K706	Purple	7.06" B dimension threaded Rod	Meritor large diameter axle	
K975	Green	9.75" B dimension threaded Rod	Intraax/Vantraax	
K150	None	15.0" B dimension threaded Rod	Universal fully threaded	



Single Kit Models	Box Color Code	Description	Typical Applications	Works with the following Auto-Slack brands & models*
Push rod kits - Fixed Clevis includes stainless steel pins and cotters installed				
K225-130	None	2.25" A dimension Fixed Clevis with 1.3" pin spacing	Truck welded clevis	1, 3, 4, 6, 8
K680-102	Orange	6.80" A dimension Fixed Clevis with 1.02 pin spacing	Standard 5" Axle Gunitite Slack	1, 2
K680-130	Yellow	6.80" A dimension Fixed Clevis with 1.3" pin spacing	Standard 5" Axle	1, 3, 4, 6, 8
K680-138	White	6.80" A dimension Fixed Clevis with 1.38" pin spacing	Standard 5" trailer axle Meritor, Stemco slack	1, 5, 7
K110-130	Brown	11.0" A dimension Fixed Clevis with 1.3" pin spacing	Intraax/Vantraax	1, 3, 4, 6, 8
K110-138	Blue	11.0" A dimension Fixed Clevis with 1.38" pin spacing	Intraax/Vantraax Meritor, Stemco slack	1, 5, 7

*Auto-Slack Notes:

1. TSE/Webb/MEI/Haldex (0.5" pin)
2. Gunitite 1000 series 1.02" pin spacing
3. Gunitite 2000 series 1.3" pin spacing
4. Meritor 1.3" pin spacing (Truck)
5. Meritor 1.38" pin spacing (Trailer)
6. Stemco 1.3" pin spacing
7. Stemco 1.38" pin spacing
8. Bendix Versajust

OEM names are used for reference purposes only.



2310 Industrial Drive S.W.
Cullman, Alabama 35055

WWW.TSEBRAKES.COM
256 736-6275

©2024 TSE Brakes, Inc.