



**THE SIMPLIFIED SOLUTION  
FOR COMPLEX NEEDS**

**ultralife+<sup>TM</sup> TSE-REX**

## **TSE ULTRALIFE PLUS REX - RAPID EXCHANGE RODS**

### **THE ULTRALIFE PLUS REX CHARACTERISTICS**

#### **Patented Design**

The UltraLife Plus REX features patented technology that eliminates common failure points, offering unmatched reliability and performance in demanding environments.

#### **Streamlined Installation**

With Rapid Exchange Technology (REX), installation time is reduced by up to 75%, and the factory-sealed diaphragm minimizes assembly errors.

#### **Versatile Fit**

Covers most applications with only two part numbers, simplifying inventory management while maintaining compatibility with various OEM platforms.

#### **Rigorous Testing**

Our extended durability testing simulates real-world operating conditions, virtually guaranteeing unmatched reliability under the most demanding environments.

### **KEY BENEFITS FOR OEM SUPPLIERS**

#### **Consistent Quality**

Every chamber undergoes extensive in-house testing, including vibration, salt spray, and pressure cycling tests, ensuring it meets stringent OEM standards.

#### **Optimized Inventory**

Minimal part numbers cover diverse applications, streamlining supply chains and reducing stocking complexity for OEMs.

#### **Production Efficiency**

Pre-assembled, universal-fit components simplify installation, reducing labor time and increasing production throughput.

#### **Comprehensive Warranty**

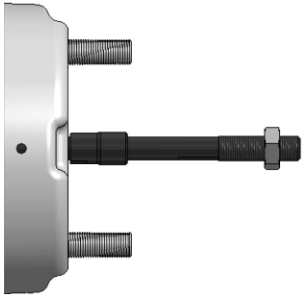
Backed by a 10-year warranty for standard applications, providing peace of mind and reducing long-term warranty costs.

# TSE ULTRALIFE PLUS REX

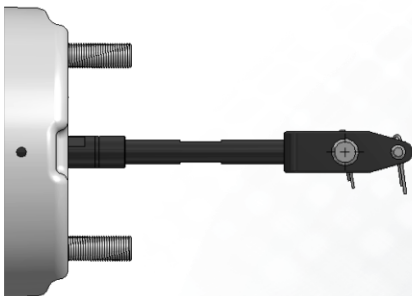


## TSE UltraLife Plus REX Part Numbers

3030TVR2ULP : 3030 2.5" Stroke | 3030TVR3ULP : 3030 3" Stroke



Single Kit Models	Box Color Code	Description	Typical Applications	Works with the following Auto-Slack brands & models*
Push rod kits - Threaded includes jam nut installed				
K575	Gold	5.75" B dimension threaded Rod	Standard 5" trailer axle	All
K631	Silver	6.31" B dimension threaded Rod	SAF axle	
K706	Purple	7.06" B dimension threaded Rod	Meritor large diameter axle	
K975	Green	9.75" B dimension threaded Rod	Intraax/Vantraax	
K150	None	15.0" B dimension threaded Rod	Universal fully threaded	



Single Kit Models	Box Color Code	Description	Typical Applications	Works with the following Auto-Slack brands & models*
Push rod kits - Fixed Clevis includes stainless steel pins and cotters installed				
K225-130	None	2.25" A dimension Fixed Clevis with 1.3" pin spacing	Truck welded clevis	1, 3, 4, 6, 8
K680-102	Orange	6.80" A dimension Fixed Clevis with 1.02" pin spacing	Standard 5" Axle Gunitite Slack	1, 2
K680-130	Yellow	6.80" A dimension Fixed Clevis with 1.3" pin spacing	Standard 5" Axle	1, 3, 4, 6, 8
K680-138	White	6.80" A dimension Fixed Clevis with 1.38" pin spacing	Standard 5" trailer axle Meritor, Stemco slack	1, 5, 7
K110-130	Brown	11.0" A dimension Fixed Clevis with 1.3" pin spacing	Intraax/Vantraax	1, 3, 4, 6, 8
K110-138	Blue	11.0" A dimension Fixed Clevis with 1.38" pin spacing	Intraax/Vantraax Meritor, Stemco slack	1, 5, 7

### \*Auto-Slack Notes:

1. TSE/Webb/MEI/Haldex (0.5" pin)
2. Gunitite 1000 series 1.02" pin spacing
3. Gunitite 2000 series 1.3" pin spacing
4. Meritor 1.3" pin spacing (Truck)
5. Meritor 1.38" pin spacing (Trailer)
6. Stemco 1.3" pin spacing
7. Stemco 1.38" pin spacing
8. Bendix Versajust

OEM names are used for reference purposes only.



2310 Industrial Drive S.W.  
Cullman, Alabama 35055

WWW.TSEBRAKES.COM  
256 736-6275

©2025 TSE Brakes, Inc.