



The Ultimate in Air Disc Brake
Performance & Durability



TSE UL-DISC

WITH HOT (HIGH OUTPUT TECHNOLOGY)

THE UL-DISC CHARACTERISTICS

Innovative Design

Features a 100% steel inverted spring bottom housing, reducing spring contact points to minimize wear and eliminate leaks or structural failures.

Comprehensive Testing

Each actuator undergoes rigorous in-house testing, including pressure cycling, vibration, and salt spray, to guarantee superior performance and reliability.

Enhanced Main Spring Durability

The UltraLife main spring exceeds SAE dry cycle standards even in slurry environments, ensuring longer life in severe-duty applications.

Exceptional Corrosion Resistance

Includes a proprietary multi-stage pre-treatment, e-coating, and an additional polyester powder coating, offering protection against rust and corrosion.

KEY BENEFITS FOR OEM SUPPLIERS

Reliable Performance

High Output Technology (HOT) delivers superior braking force at a lower cost compared to piston alternatives, ideal for OEMs prioritizing performance and value.

Durable Construction

Robust all-steel design and enhanced corrosion protection reduce maintenance needs and improve overall vehicle uptime.

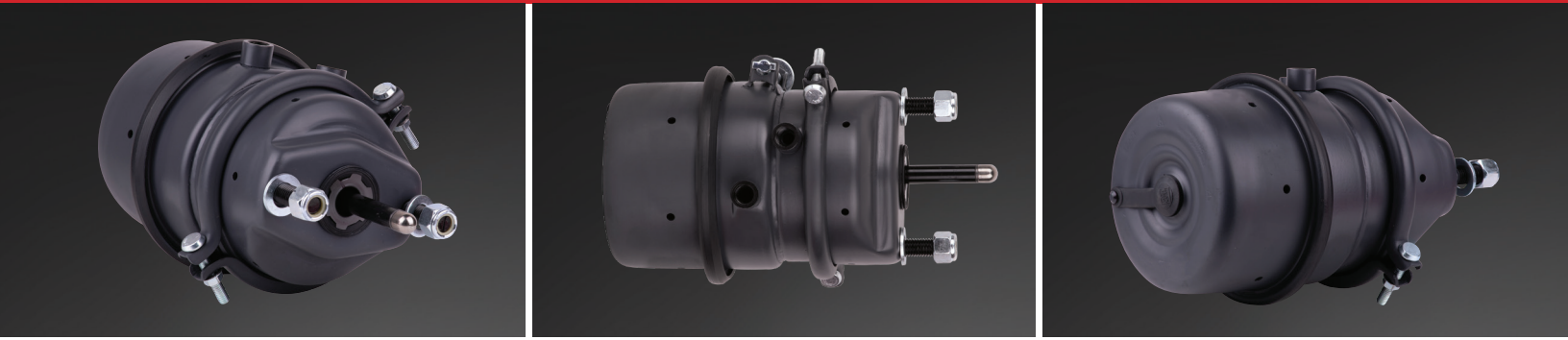
Optimized For Efficiency

Compact design with a recessed pressure plate allows for a smaller chamber, making it easier to integrate into various vehicle platforms.

Premium Quality Assurance

Manufactured in an ISO 9001 and KBA-certified facility, ensuring each product meets stringent OEM standards and reliability expectations.

The Ultimate in Air Disc Brake Performance & Durability



PART NUMBER	CATEGORY	DESCRIPTION	CAGED
1816HTND2UL-4312	High Output Technology (HOT) Air Disc Brake	For 1816 Piston Or 1824 Double Diaphragm	Y
2016HTND2UL-4313	High Output Technology (HOT) Air Disc Brake	For 2016 Piston Or 2024 Double Diaphragm	Y
1824TLD2HUL-4249	High Output Technology (HOT) Air Disc Brake	For 1816 Piston Or 1824 Double Diaphragm, 2.5" stroke, road side	Y
1824TLD2HUL-4250	High Output Technology (HOT) Air Disc Brake	For 1816 Piston Or 1824 Double Diaphragm, 2.5" stroke, curb side	Y



2310 Industrial Drive S.W.
Cullman, Alabama 35055

WWW.TSEBRAKES.COM
256 736-6275

©2025 TSE Brakes, Inc.